

# SPOTLIGHT ON PEST CONTROL

## ADVANCE Termite & Pest Control, Inc.

Fall 2014



### Insulating your home

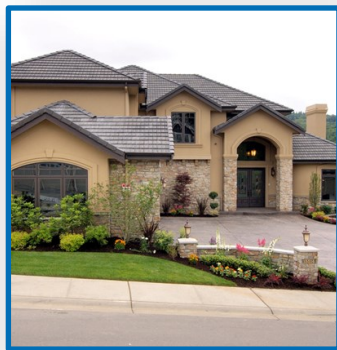
is the best means of saving money month after month on utility bills. According to the Department of Energy, 30-45% of all energy wasted is lost through the roof and walls of a home. In fact, when cellulose insulation is properly installed by a professional insulation contractor, **no other energy improvement investment is recouped faster.**

**ADVANCE** Pest Control now offers services for the insulation of your attic, with the added benefit of insect control. Contact our office to request a brochure or schedule one of our technicians to give you an estimate for insulation to give your home additional warmth in the winter and cooling in summer!

620.662.3616

800.536.3614

[advance@advancepest.com](mailto:advance@advancepest.com)



The Sentricon® System  
Presidential Green  
Chemistry Challenge  
**Award Winner**

\*Trademark of Dow AgroSciences LLC. Always read and follow label directions.

*For years, termites have gone after your home. Isn't it time you went after theirs?*

*SENTRICON\* - a revolutionary method that actually eliminates termite colonies..*



It's not too early to think about next year's lawn care!



October is Breast Cancer Awareness Month. During the months of October and November, our company will donate \$10.00 for every termite inspection provided by our technicians. We will also match donations from our customers, up to \$100.00 per donation. All donations will be given to the Cancer Council of Reno County.



### ADVANCE

Termite & Pest Control now offers fertilization and weed control applications with several professional programs from which to choose.

# RODENTS, BEETLES AND FLIES. . . Oh, my!

As autumn days get shorter and outdoor temperatures begin to fall, little visitors may begin to invade your home. Rodents, insects, beetles and flies can suddenly appear by the hundreds or even by the thousands.

Most of these pests do little or no harm to us, our homes or our health, but they can multiply to serious numbers quickly. Suddenly they appear to be everywhere and in everything, often becoming more active during winter warm spells and becoming a serious nuisance when they try to find their way back outside in the spring.

Rodents and other urban wildlife can pose serious health risks by harboring and spreading disease such as hantavirus and plague. They often cause damage to structures by chewing or tearing holes in walls, doors or screens. They can also damage and contaminate food with their urine and droppings.

If you have problems with these unwelcome pests, call our office. We are ready to help you identify, survey for and control them, using an Integrated Pest Management approach.

**IF YOU'VE TRIED ALL THE REST, *ADVANCE* TO THE BEST!**

## Bed Bugs Plague Families



By the late 20th century, bed bugs had gone from being a major pest to being quite rare. Scientists attribute this to: vigilant homeowners knew tell-tale signs; advanced pest control technology; natural decline in the cyclical nature of pests; and more concern about pests, along with a tendency to seek pest control before a major infestation.

The amazing resurgence of bed bugs in the past few years may be attributed to: more common travel; more transient society with people moving often; and modern pest control technology that targets pests so that whole areas are not treated, but rather certain areas where pests are known to live.

The most common bed bug is flat, has a reddish to brown color and is about the size/shape of a lentil. Bed bugs are nocturnal so you normally won't see them during the day. Surprisingly, bed bugs not only infest seams and beds, but will also hide in cracks and crevices, such as behind baseboards and behind frames on walls. They will live anywhere humans are near, and not just in bedrooms. Bed bugs prosper in homes, apartments, hospitals, hotels and dormitories. Bed bug infestations are not an indication of poor sanitation; bed bugs do just as well in perfectly clean houses or hotels.

A bed bug must shed its shell to grow; and bed bugs require a blood meal. If no blood meal is available, the bed bug can wait for up to one year! Usually small droplets on sheets or upholstery (bed bug droppings) are the first signs of bed bugs. Also, some people react to bites and may notice welts that itch. Fortunately, there is no data to confirm that bed bugs spread disease.

If you suspect a bed bug infestation, contact our company for a thorough inspection. If you do have a bed bug infestation, don't panic! And don't feel that you have an unclean area. Remember, bed bugs can infest even the cleanest areas.

We have the latest technologies to control bed bugs in your structure. Control methods described on the Internet seldom work and waiting to call a pest control professional will only increase the size of the infestation. When the infested area is found, we will target treatment strategies for the maximum effectiveness, with minimal disruption to your daily activities.

## Contact us

for more information about our services and products .

**ADVANCE Termite &  
Pest Control, Inc.**

620.662.3616

800.536.3614

e-mail:

[advance@advancepest.com](mailto:advance@advancepest.com)

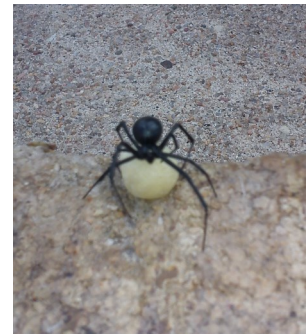
Visit us on the web at  
[www.advancepest.com](http://www.advancepest.com) and  
"like" us on



**Authorized to sell  
and service the**

**Sentricon<sup>®</sup>**  
**Colony Elimination System**

©TM Trademark of Dow AgroSciences LLC



**Black widow spider with  
egg sac**

Advance appreciates the opportunity to bring you this Newsletter containing information intended to enhance your life and make it more enjoyable. Please pass our Newsletter along to friends and relatives who might need our company's services.

Questions or comments? Please call our office at 662.3616 or 800.536.3614 or e-mail us ([helen@advancepest.com](mailto:helen@advancepest.com)) Thanks!