

Focus on Pest Control

ADDRESSING OUR CUSTOMERS'
TERMITE AND PEST CONTROL
NEEDS SINCE 1985.

TERMITE SWARMS

Usually, one of the first signs of a termite infestation is the appearance of swarmers (pictured above), which is in the spring for the species of termite found in Kansas. Swarms usually generate panic calls from homeowners who suddenly see what can be thousands of winged termites appearing in a living room or basement or even outside. Swarms are an indication that termites are present and that a healthy colony may be nearby. If you see mud tubes or see a swarm this spring, call our office to schedule an inspection. Keep some of the insects for our inspector to identify and we'll discuss a treatment plan that will provide ongoing protection for your home or business.

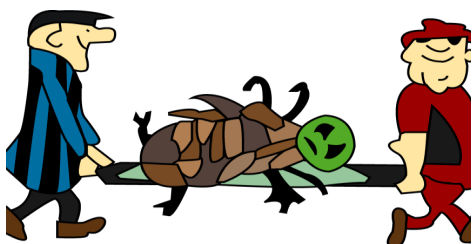
OVERWINTERING WASP QUEENS

If you happen to see one or two lone wasps inside your house this spring, don't be alarmed, it's probably just an overwintering queen that has become trapped indoors. Cold temperatures kill paper wasp colonies every winter, but before they are eliminated, the colonies produce male wasps to mate with a few lucky females who will be next summer's queens. These mated females overwinter in sheltered places (under logs or behind loose tree bark) to survive the dropping temperatures. Often the overwintering future queens will climb behind siding or through attic vents to seek shelter.



As temperatures warm in the spring, most of these wasps "wake up" from their winter slumber and fly outside where they begin the work of building a new nest, laying eggs and foraging for food to feed developing larvae. But, instead of flying out, some overwintering wasps find their way into the living spaces of homes. You might see some of these wasps flying around windows attempting to exit. Often they will seem sluggish or clumsy from their "long winter nap". In most cases, overwintering queen wasps are docile, although they are capable of stinging. Generally they are more interested in getting outdoors than bothering humans.

Opening a window or door will usually be enough to encourage wasps to fly outside, where they belong. It's a good idea to let your pest management professional know about these sightings on his next visit so that a careful inspection can be made of your property to identify nest-building activity and stop it in its tracks. Once paper wasps begin building nests, they can be aggressive when disturbed and can inflict a painful sting.



ADVANCE

Termite & Pest Control, Inc.
2515 E. 14th Avenue, Hutchinson KS 67501
620.662.3616 800.536.3614
www.advancepest.com

KIDS' CORNER



What's a mandible?

Mandibles on an insect make up the insect's movable mouthparts. Mandibles vary with each insect, like teeth vary in larger animals, de-

pending on the food of the insect or animal.

Mandibles are used not only for feeding but also for attack and defense. Certain bees, ants and wasps also use their mandibles to build nests.

CHECK OUT MORE FUN PEST FACTS AT

www.kidspestworld.org. You can find a link to this website at www.advancepest.com

ON THEIR BEST BEHAVIOR: How to Guide Your Children

As a parent, you are your children's first teacher, helping them to learn how to behave in all kinds of situations. Here are some tips to help you bring out their best:

- ⇒ **BE CLEAR ABOUT RULES, BUT PICK YOUR BATTLES.** Dangerous behavior that can hurt someone must be dealt with. Behaviors that are annoying, but not harmful, can simply be ignored.
- ⇒ **BE CONSISTENT.** Always correct behaviors that break the rules you've set. Use "timeouts" for children ages 18 months to 5 years. For older children, take away privileges, such as TV watching or time with friends.

BE THE KIND OF PERSON YOU WANT YOUR CHILDREN TO BE.

WHY HAVE A SENTRICON* SYSTEM INSTALLED?

More than 70 studies have demonstrated the proven efficacy of the Sentricon* System. Multiple research studies show that Recruit® HD termite bait is preferred by termites [more than 10 times over wood](#) and that in-ground bait stations become [more palatable to](#) termites over time — not less.

What does this all mean for you as a property owner? Simple: Once installed, the Sentricon* System with Always Active technology immediately begins the termite colony elimination process, remaining just as effective throughout the year as it was on Day 1.

Every renewal of the Sentricon* System monitoring service is another year that your home is continuously protected against current and future termite threats.

This newsletter is intended to bring you information to make your life easier and more enjoyable. Please pass this Newsletter along to friends and relatives who might need our services.

If you have questions or comments, please call our office at 662.3616 or 800.536.3614 or e-mail us at advance@advancepest.com.

We sincerely appreciate your business!



Meet Addie, our office kitty since 2011.

CARPENTER BEES

Carpenter bees are "solitary" bees that provide food and a nest for their young, but do not care for them after that.

Only female carpenter bees excavate the wood chambers, and many females may use the same entry hole in a single board with parallel but separate chambers.

Since carpenter bees do not eat wood, they do not care how it tastes and may even prefer soft woods such as redwood and cedar that are somewhat resistant to other wood-boring insects.

Burrows used and extended by female bees year after year may have chambers 12 feet long or longer.

Carpenter bees are distinguished from bumblebees by their shiny, almost hairless abdomen on top.

Only female carpenter bees are capable of stinging and will do so if they feel they are in danger.

